

# ASC

## Remote Camera System Dome Housing



### SUN SHIELD

withstands High & Low Temp  
\*optional item

### HEAT SINK

Cool Down Camera Temp  
\*optional item



### IP66

Waterproof



### RIGHT ANGLE BRACKET

withstands Gusty Wind  
\*optional item



### Camera Compatibility

#### Canon

CR-N100  
CR-N300

#### Panasonic

AW-UE80  
AW-UE40  
AW-UE50

\* AW-UE100 is compatible with  
Housing Model A-ODW77S Series.

#### SONY

BRC-X400  
SRG-A40  
SRG-X400  
SRG-X120

\*Examples

# Remote Camera System Dome Housing **A-ODW7GH** Series

## How to select Model Name

A-ODW7GH **C** **12(POE+M)** **S** **A** **M** **(OW)** **-TTC**

1	Capsule	C= Clear, T= Tinted
2	Blower & Heater	2= 24VAC 25W, 2(50W)= 24VAC 50W for Cold Area 12= 12VDC, 12(50W)= 12VDC 50W for Cold Area 12(POE+M)= Type 12VDC Blower & Heater and PoE Splitter installed in housing and Midspan are packed in product box.
3	Sunshield	Blank= without Sunshield, S= with Sunshield
4	Type of Bracket	Blank= Wall Mount W Type W Bracket A= Wall Mount, BCDE= Ceiling Mount Type
5	Microphone	Blank= Without MIC, M= with MIC
6	Housing Color	Blank= Standard Silver, OW= Offi-white, DB= Dark Brown
7	Optional Paint	Blank= Standard One Coat, -TC= 2 Coat, -TTC= 3 Coat

### CAPSULE



Clear

Tinted

### SUNSHIELD



w/o Sunshield

w/Sunshield

### COLOR OF HOUSING



Silver(Standard)

OW(Off-white)

DB(Darkbrown)

### WALL MOUNT



Type W

Type A

### CEILING MOUNT



Type B

Type C

Type D

Type E

### MICROPHONE



\*Optional Item  
φ3.5mm Monoral Connector

### ACCESSORIES FOR MOUNTING BRACKET



**Pole Mount Adapter**  
Black: A-BK3, A-BK3S(SUS304)  
Off-white: A-BK3(OW), A-BK3S(OW)(SUS304)  
Dark Brown: A-BK3(DB), A-BK3S(DB)(SUS304)



**1-1/2" NPT Pipe**  
A-PIPE1F 30cm(1ft)  
A-PIPE3F 90cm(3ft)



**Corner Mount Adapter**  
Black: A-CM3  
Offwhite: A-CM3(OW)  
Darkbrown: A-CM3(DB)

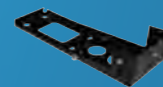


**Coupling for 1-1/2" NPT**  
A-JC3INCH

### OPTIONAL ITEM



Heat Sink



Right Angle Bracket

### Other Accessories



A-PS2412  
24VAC - 12VDC Converter  
(Max 2.5A)

※Specifications are subject to change without prior notice

<http://www.kk-asc.com>

Manufactured by

**ASC**

**ASC Corporation**

3-16-9, Toranomon, Minato-ku, Tokyo 105-0001, Japan  
Tel : +81-3-5473-7627 Fax : +81-3-5473-7628

(Wholesale for U.S.A Market only)

**ASC-USA, INC.**

5975 Shiloh Road, Suite 103, Alpharetta, GA 30005  
Tel : 770-888-4674 / 1-888-988-4674 Fax : 770-888-4675